

ASPECT CTV

Rainscreen façade system

DATASHEET



MAPLE

ASPECT CTV

Rainscreen façade system

CONTENTS

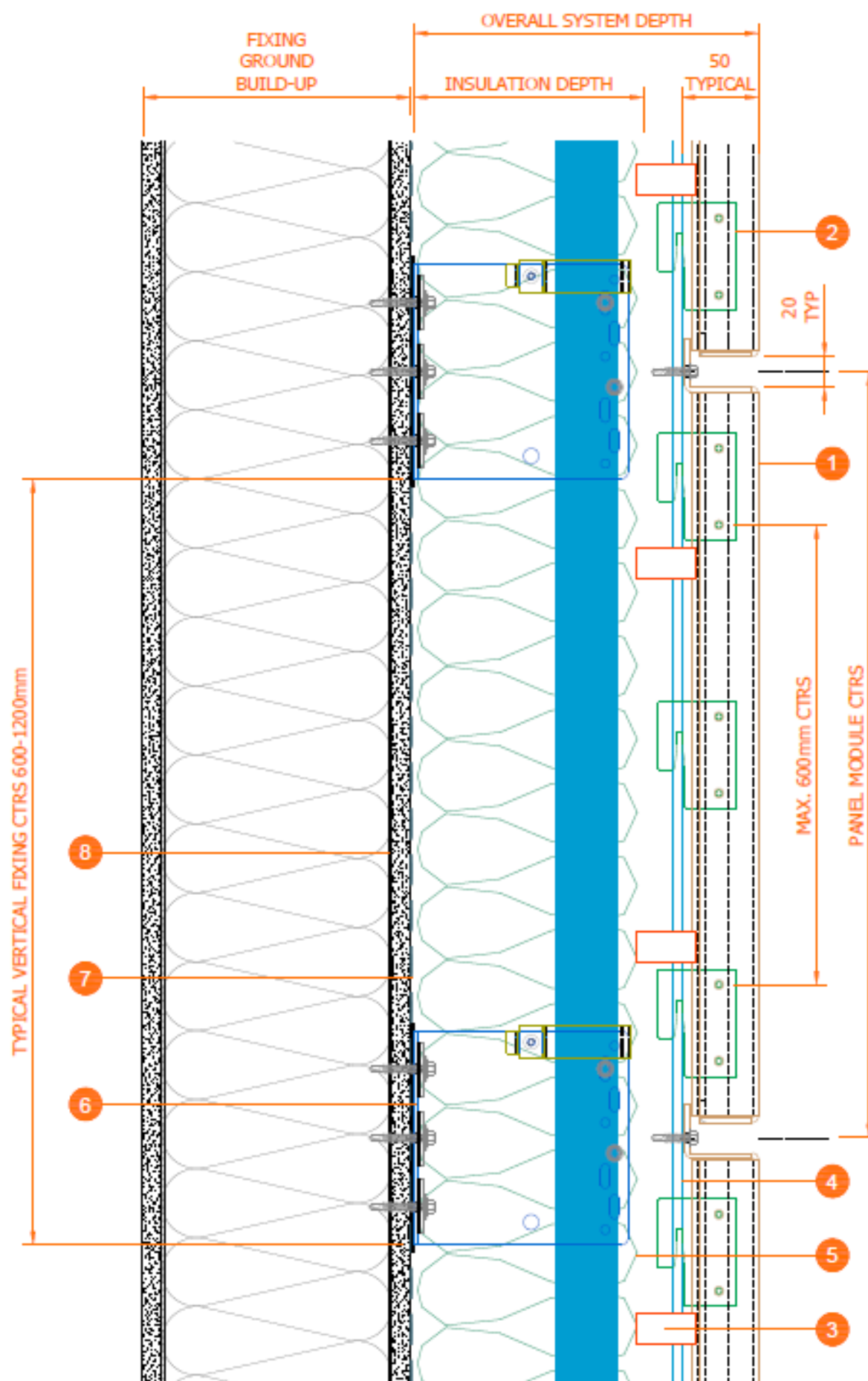
1. HORIZONTAL JOINT DETAIL
2. FOLD AND HOLE DETAIL
3. VERTICAL JOINT DETAIL
4. HORIZONTAL MOVEMENT DETAIL
5. HEAD PARAPET DETAIL
6. BASE DETAIL
7. WINDOW HEAD DETAIL (OPTION A)
8. WINDOW HEAD DETAIL (OPTION B)
9. WINDOW CILL DETAIL
10. WINDOW JAMB DETAIL
11. EXTERNAL CORNER DETAIL
12. INTERNAL CORNER DETAIL
13. NBS SPECIFICATION
14. 3D GALLERY

ASPECT CTV

Rainscreen façade system

Drawing legend

1. MAPLE CASSETTE PANEL. MATERIAL AS REQUIRED (DETAIL INDICATES 3mm ALUMINIUM)
2. MAPLE PANEL SIDE HOOK (5000 SERIES ALUMINIUM, TYPICALLY MILL FINISH)
3. MAPLE INSULATION CLIP AT MAX. 600mm CTRS (PPC FINISH MAPLE ORANGE)
4. MAPLE T-RAIL MULLION (MILL FINISH 6063 T6 ALUMINIUM)
5. THERMAL INSULATION AS REQUIRED
6. MAPLE 304Gr STAINLESS STEEL BRACKET c/w HELPING HAND CLIP (REMOVABLE FOR REUSE)
7. BREATHER MEMBRANE (IF REQUIRED)
8. SUITABLE FIXING GROUNDS



DRAWING TITLE: ASPECT CTV RAINSCREEN SYSTEM HORIZONTAL JOINT DETAIL

DATE: JAN 2023

DRAWN: EMG

SCALE: DO NOT SCALE

DOCUMENT REF: SD-RS-CA-AV-003

MAPLE

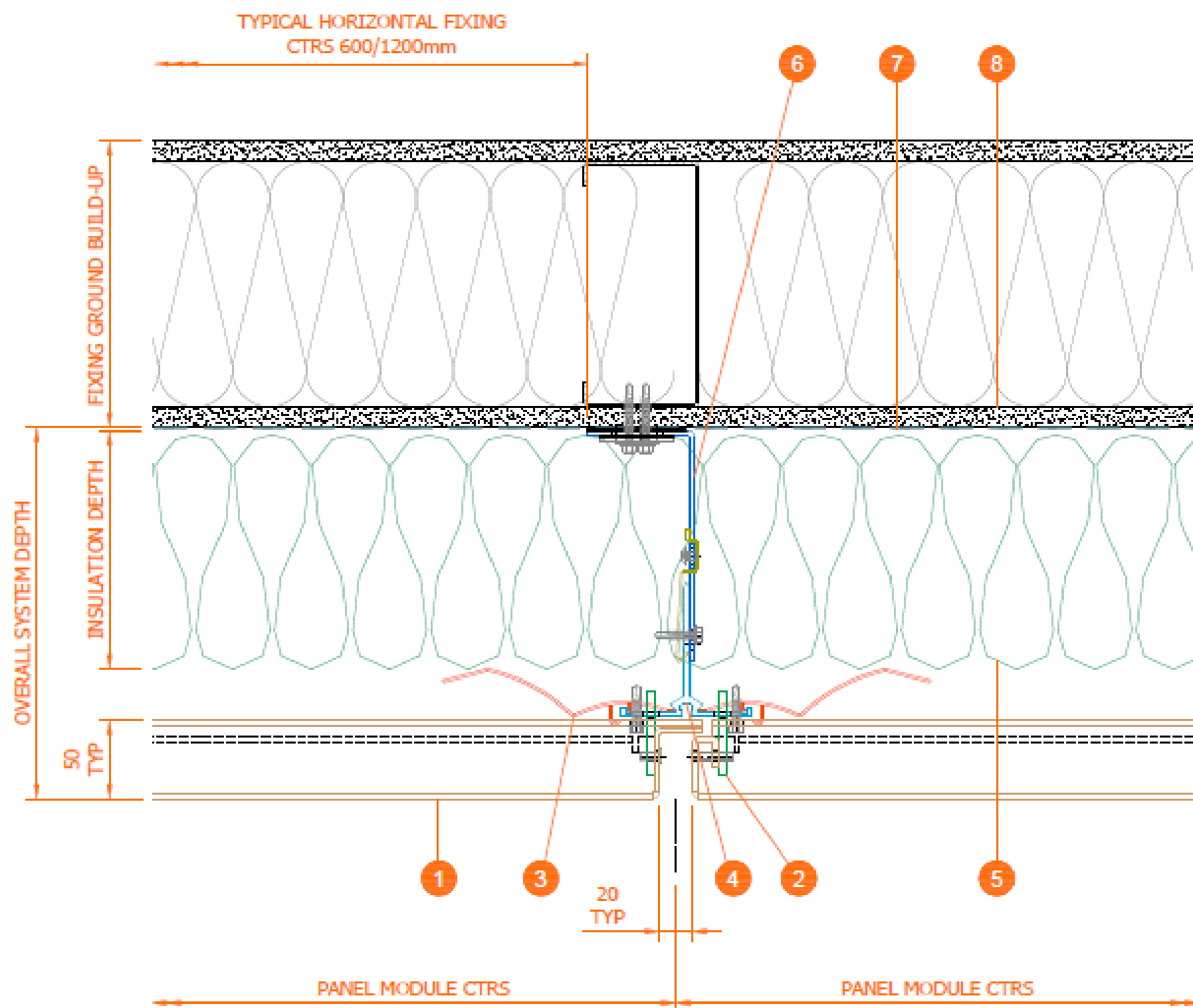
www.maplesunscreening.co.uk

Tel: 0161 456 6644

Units 11a-11d Bramhall Technology Park, Pepper Rd
Hazel Grove, Stockport, Cheshire, SK7 5SA

ASPECT CTV

Rainscreen façade system



Drawing legend

- | | | |
|--|--|------------------------------------|
| 1. MAPLE CASSETTE PANEL. MATERIAL AS REQUIRED (DETAIL INDICATES 3mm ALUMINIUM) | 4. MAPLE T-RAIL MULLION (MILL FINISH 6063 T6 ALUMINIUM) | 7. BREATHER MEMBRANE (IF REQUIRED) |
| 2. MAPLE PANEL SIDE HOOK (5000 SERIES ALUMINIUM, TYPICALLY MILL FINISH) | 5. THERMAL INSULATION AS REQUIRED | 8. SUITABLE FIXING GROUNDS |
| 3. MAPLE INSULATION CLIP AT MAX. 600mm CTRS (PPC FINISH MAPLE ORANGE) | 6. MAPLE 304Gr STAINLESS STEEL BRACKET c/w HELPING HAND CLIP (REMOVABLE FOR REUSE) | |

DRAWING TITLE: ASPECT CTV RAINSCREEN SYSTEM VERTICAL JOINT DETAIL

DATE: JAN 2023

DRAWN: EMG

SCALE: DO NOT SCALE

DOCUMENT REF: SD-RS-CA-AV-004

MAPLE

www.maplesunscreening.co.uk

Tel: 0161 456 6644

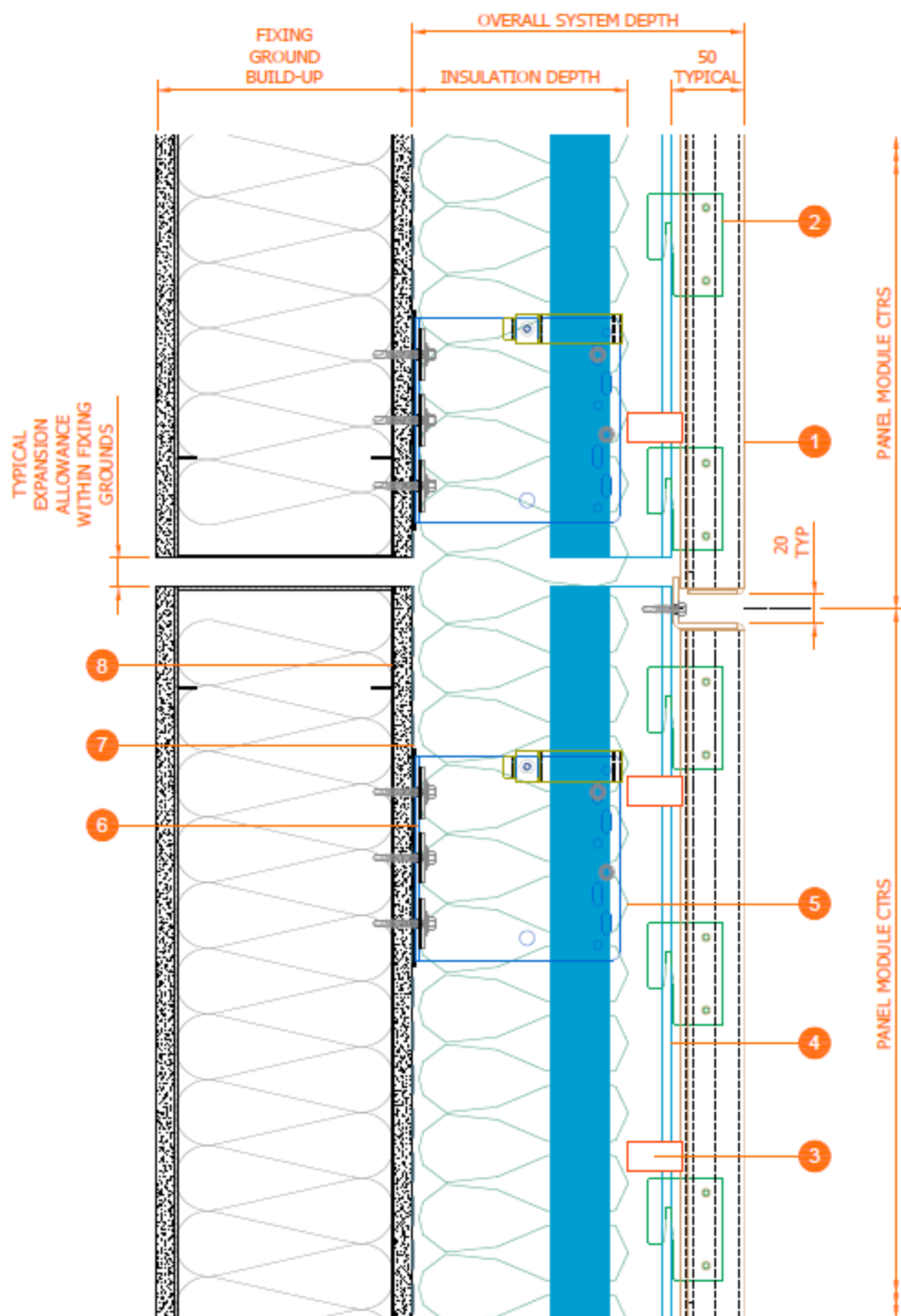
Units 11a-11d Bramhall Technology Park, Pepper Rd
Hazel Grove, Stockport, Cheshire, SK7 5SA

ASPECT CTV

Rainscreen façade system

Drawing legend

1. MAPLE CASSETTE PANEL. MATERIAL AS REQUIRED (DETAIL INDICATES 3mm ALUMINIUM)
2. MAPLE PANEL SIDE HOOK (5000 SERIES ALUMINIUM, TYPICALLY MILL FINISH)
3. MAPLE INSULATION CLIP AT MAX. 600mm CTRS (PPC FINISH MAPLE ORANGE)
4. MAPLE T-RAIL MULLION (MILL FINISH 6063 T6 ALUMINIUM)
5. THERMAL INSULATION AS REQUIRED
6. MAPLE 304Gr STAINLESS STEEL BRACKET c/w HELPING HAND CLIP (REMOVABLE FOR REUSE)
7. BREATHER MEMBRANE (IF REQUIRED)
8. SUITABLE FIXING GROUNDS



DRAWING TITLE: ASPECT CTV RAINSCREEN SYSTEM HORIZONTAL MOVEMENT DETAIL

DATE: JAN 2023

DRAWN: EMG

SCALE: DO NOT SCALE

DOCUMENT REF: SD-RS-CA-AV-005

MAPLE

www.maplesunscreening.co.uk

Tel: 0161 456 6644

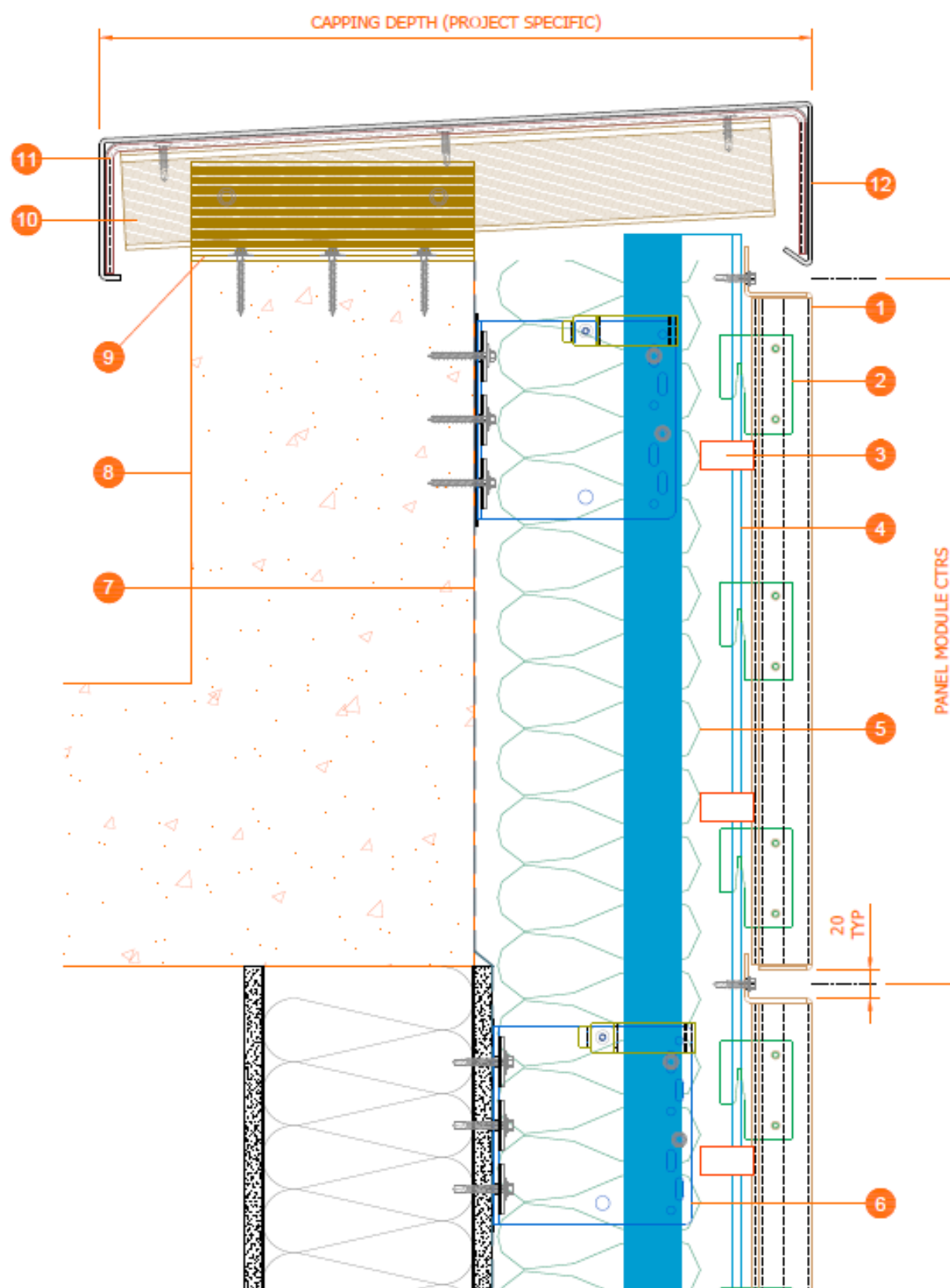
Units 11a-11d Bramhall Technology Park, Pepper Rd
Hazel Grove, Stockport, Cheshire, SK7 5SA

ASPECT CTV

Rainscreen façade system

Drawing legend

1. MAPLE CASSETTE PANEL. MATERIAL AS REQUIRED (DETAIL INDICATES 3mm ALUMINIUM)
2. MAPLE PANEL SIDE HOOK (5000 SERIES ALUMINIUM, TYPICALLY MILL FINISH)
3. MAPLE INSULATION CLIP AT MAX. 600mm CTRS (PPC FINISH MAPLE ORANGE)
4. MAPLE T-RAIL MULLION (MILL FINISH 6063 T6 ALUMINIUM)
5. THERMAL INSULATION AS REQUIRED
6. MAPLE 304Gr STAINLESS STEEL BRACKET c/w HELPING HAND CLIP (REMOVABLE FOR REUSE)
7. BREATHER MEMBRANE (IF REQUIRED)
8. SUITABLE FIXING GROUNDS
9. MAPLE CAPPING T&L EXTRUSION TO SUITABLE STRUCTURE
10. MAPLE CAPPING T EXTRUSION SET TO DESIRED ANGLE
11. MAPLE CAPPING SEAL EXTRUSION
12. MAPLE CAPPING TO SUIT PROJECT REQUIREMENTS



DRAWING TITLE: ASPECT CTV RAINSCREEN SYSTEM HEAD PARAPET DETAIL

DATE: JAN 2023

DRAWN: EMG

SCALE: DO NOT SCALE

DOCUMENT REF: SD-RS-CA-AV-006

MAPLE www.maplesunscreening.co.uk

Tel: 0161 456 6644

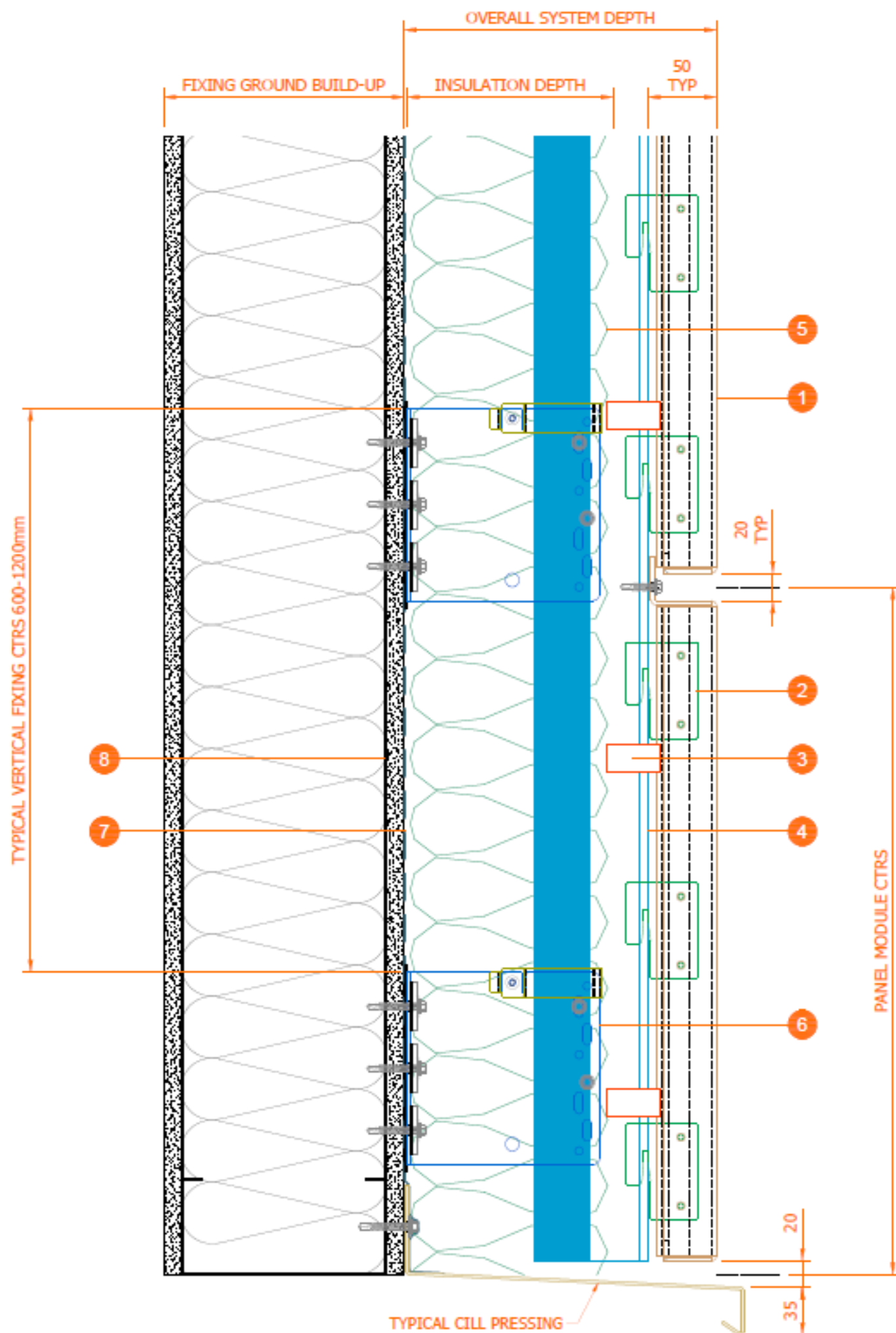
Units 11a-11d Bramhall Technology Park, Pepper Rd
Hazel Grove, Stockport, Cheshire, SK7 5SA

ASPECT CTV

Rainscreen façade system

Drawing legend

1. MAPLE CASSETTE PANEL. MATERIAL AS REQUIRED (DETAIL INDICATES 3mm ALUMINIUM)
2. MAPLE PANEL SIDE HOOK (5000 SERIES ALUMINIUM, TYPICALLY MILL FINISH)
3. MAPLE INSULATION CLIP AT MAX. 600mm CTRS (PPC FINISH MAPLE ORANGE)
4. MAPLE T-RAIL MULLION (MILL FINISH 6063 T6 ALUMINIUM)
5. THERMAL INSULATION AS REQUIRED
6. MAPLE 304Gr STAINLESS STEEL BRACKET c/w HELPING HAND CLIP (REMOVABLE FOR REUSE)
7. BREATHER MEMBRANE (IF REQUIRED)
8. SUITABLE FIXING GROUNDS



DRAWING TITLE: ASPECT CTV RAINSCREEN SYSTEM BASE DETAIL

DATE: JAN 2023

DRAWN: EMG

SCALE: DO NOT SCALE

DOCUMENT REF: SD-RS-CA-AV-007

MAPLE

www.maplesunscreening.co.uk

Tel: 0161 456 6644

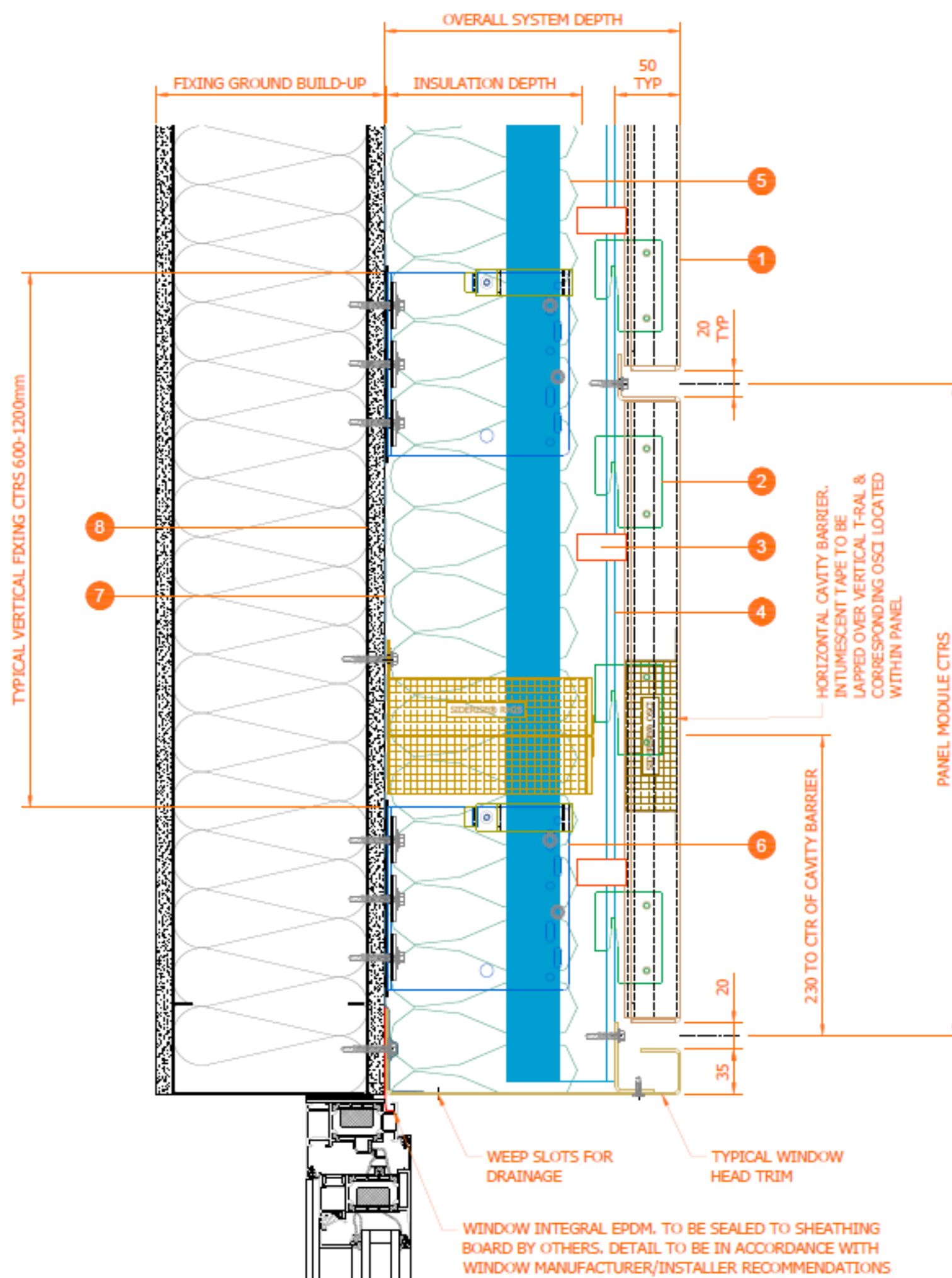
Units 11a-11d Bramhall Technology Park, Pepper Rd
Hazel Grove, Stockport, Cheshire, SK7 5SA

ASPECT CTV

Rainscreen façade system

Drawing legend

1. MAPLE CASSETTE PANEL. MATERIAL AS REQUIRED (DETAIL INDICATES 3mm ALUMINIUM)
2. MAPLE PANEL SIDE HOOK (5000 SERIES ALUMINIUM, TYPICALLY MILL FINISH)
3. MAPLE INSULATION CLIP AT MAX. 600mm CTRS (PPC FINISH MAPLE ORANGE)
4. MAPLE T-RAIL MULLION (MILL FINISH 6063 T6 ALUMINIUM)
5. THERMAL INSULATION AS REQUIRED
6. MAPLE 304Gr STAINLESS STEEL BRACKET c/w HELPING HAND CLIP (REMOVABLE FOR REUSE)
7. BREATHER MEMBRANE (IF REQUIRED)
8. SUITABLE FIXING GROUNDS



DRAWING TITLE: ASPECT CTV RAINSCREEN SYSTEM WINDOW HEAD DETAIL - OPTION A

DATE: JAN 2023

DRAWN: EMG

SCALE: DO NOT SCALE

DOCUMENT REF: SD-RS-CA-AV-008

MAPLE

www.maplesunscreening.co.uk

Tel: 0161 456 6644

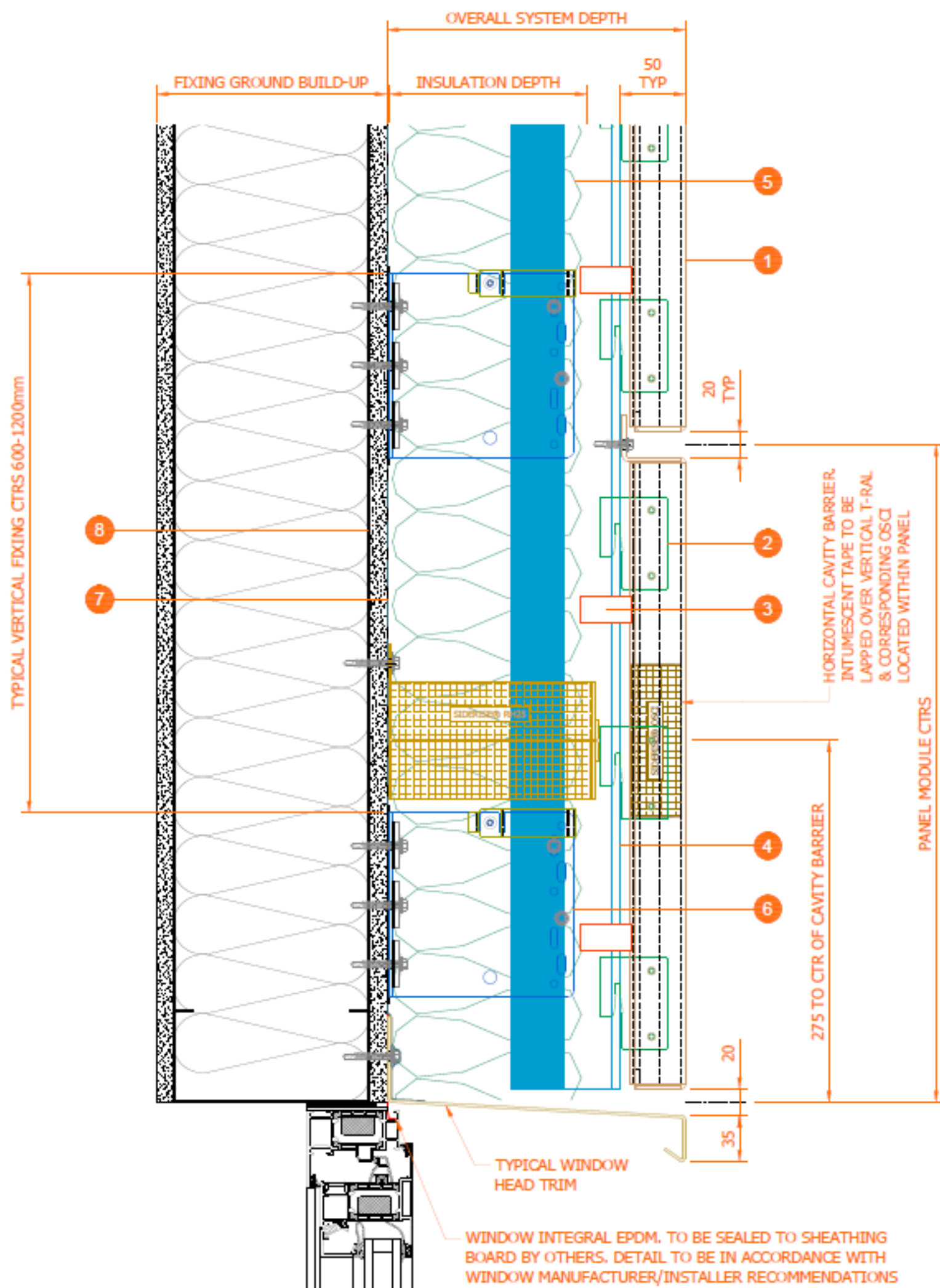
Units 11a-11d Bramhall Technology Park, Pepper Rd
Hazel Grove, Stockport, Cheshire, SK7 5SA

ASPECT CTV

Rainscreen façade system

Drawing legend

1. MAPLE CASSETTE PANEL. MATERIAL AS REQUIRED (DETAIL INDICATES 3mm ALUMINIUM)
2. MAPLE PANEL SIDE HOOK (5000 SERIES ALUMINIUM, TYPICALLY MILL FINISH)
3. MAPLE INSULATION CLIP AT MAX. 600mm CTRS (PPC FINISH MAPLE ORANGE)
4. MAPLE T-RAIL MULLION (MILL FINISH 6063 T6 ALUMINIUM)
5. THERMAL INSULATION AS REQUIRED
6. MAPLE 304Gr STAINLESS STEEL BRACKET c/w HELPING HAND CLIP (REMOVABLE FOR REUSE)
7. BREATHER MEMBRANE (IF REQUIRED)
8. SUITABLE FIXING GROUNDS



DRAWING TITLE: ASPECT CTV RAINSCREEN SYSTEM WINDOW HEAD DETAIL - OPTION B

DATE: JAN 2023

DRAWN: EMG

SCALE: DO NOT SCALE

DOCUMENT REF: SD-RS-CA-AV-009

MAPLE

www.maplesunscreening.co.uk

Tel: 0161 456 6644

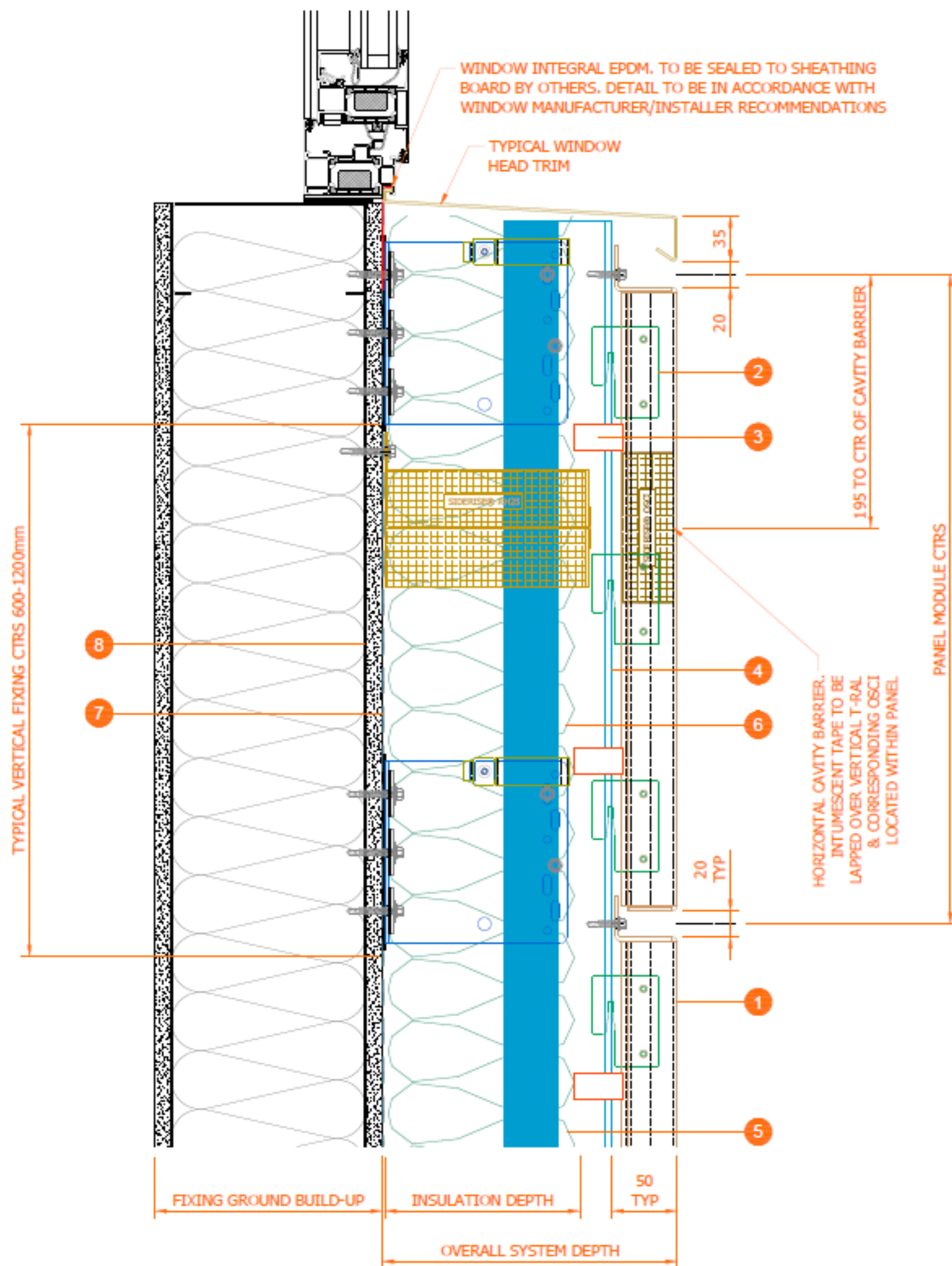
Units 11a-11d Bramhall Technology Park, Pepper Rd
Hazel Grove, Stockport, Cheshire, SK7 5SA

ASPECT CTV

Rainscreen façade system

Drawing legend

1. MAPLE CASSETTE PANEL. MATERIAL AS REQUIRED (DETAIL INDICATES 3mm ALUMINIUM)
2. MAPLE PANEL SIDE HOOK (5000 SERIES ALUMINIUM, TYPICALLY MILL FINISH)
3. MAPLE INSULATION CLIP AT MAX. 600mm CTRS (PPC FINISH MAPLE ORANGE)
4. MAPLE T-RAIL MULLION (MILL FINISH 6063 T6 ALUMINIUM)
5. THERMAL INSULATION AS REQUIRED
6. MAPLE 304Gr STAINLESS STEEL BRACKET c/w HELPING HAND CLIP (REMOVABLE FOR REUSE)
7. BREATHER MEMBRANE (IF REQUIRED)
8. SUITABLE FIXING GROUNDS



DRAWING TITLE: ASPECT CTV RAINSCREEN SYSTEM WINDOW CILL DETAIL

DATE: JAN 2023

DRAWN: EMG

SCALE: DO NOT SCALE

DOCUMENT REF: SD-RS-CA-AV-010

MAPLE

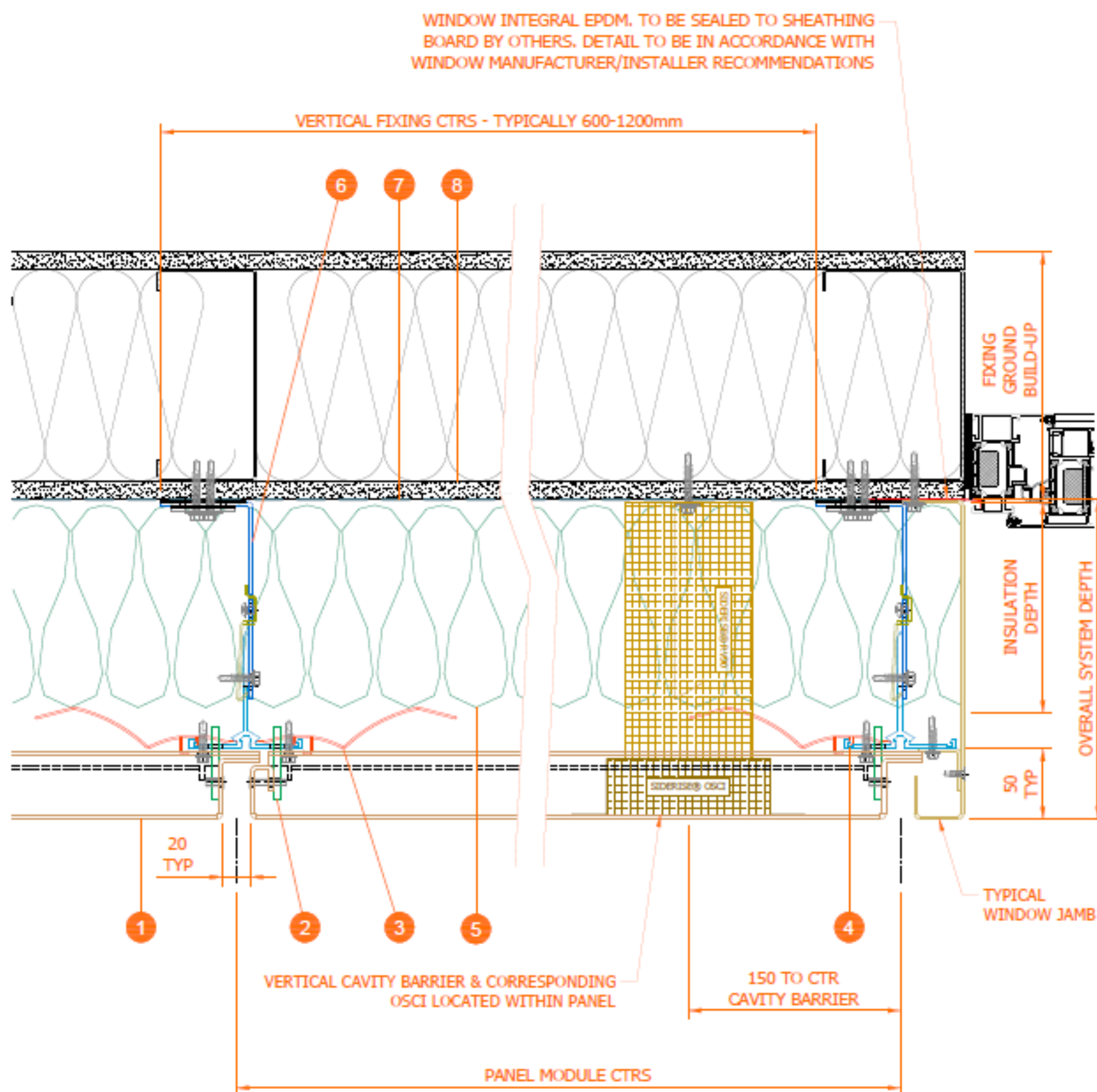
www.maplesunscreening.co.uk

Tel: 0161 456 6644

Units 11a-11d Bramhall Technology Park, Pepper Rd
Hazel Grove, Stockport, Cheshire, SK7 5SA

ASPECT CTV

Rainscreen façade system



Drawing legend

- | | | |
|--|--|------------------------------------|
| 1. MAPLE CASSETTE PANEL. MATERIAL AS REQUIRED (DETAIL INDICATES 3mm ALUMINIUM) | 4. MAPLE T-RAIL MULLION (MILL FINISH 6063 T6 ALUMINIUM) | 7. BREATHER MEMBRANE (IF REQUIRED) |
| 2. MAPLE PANEL SIDE HOOK (5000 SERIES ALUMINIUM, TYPICALLY MILL FINISH) | 5. THERMAL INSULATION AS REQUIRED | 8. SUITABLE FIXING GROUNDS |
| 3. MAPLE INSULATION CLIP AT MAX. 600mm CTRS (PPC FINISH MAPLE ORANGE) | 6. MAPLE 304Gr STAINLESS STEEL BRACKET c/w HELPING HAND CLIP (REMOVABLE FOR REUSE) | |

DRAWING TITLE: ASPECT CTV RAINSCREEN SYSTEM WINDOW JAMB DETAIL

DATE: JAN 2023

DRAWN: EMG

SCALE: DO NOT SCALE

DOCUMENT REF: SD-RS-CA-AV-011

MAPLE www.maplesunscreening.co.uk
Tel: 0161 456 6644

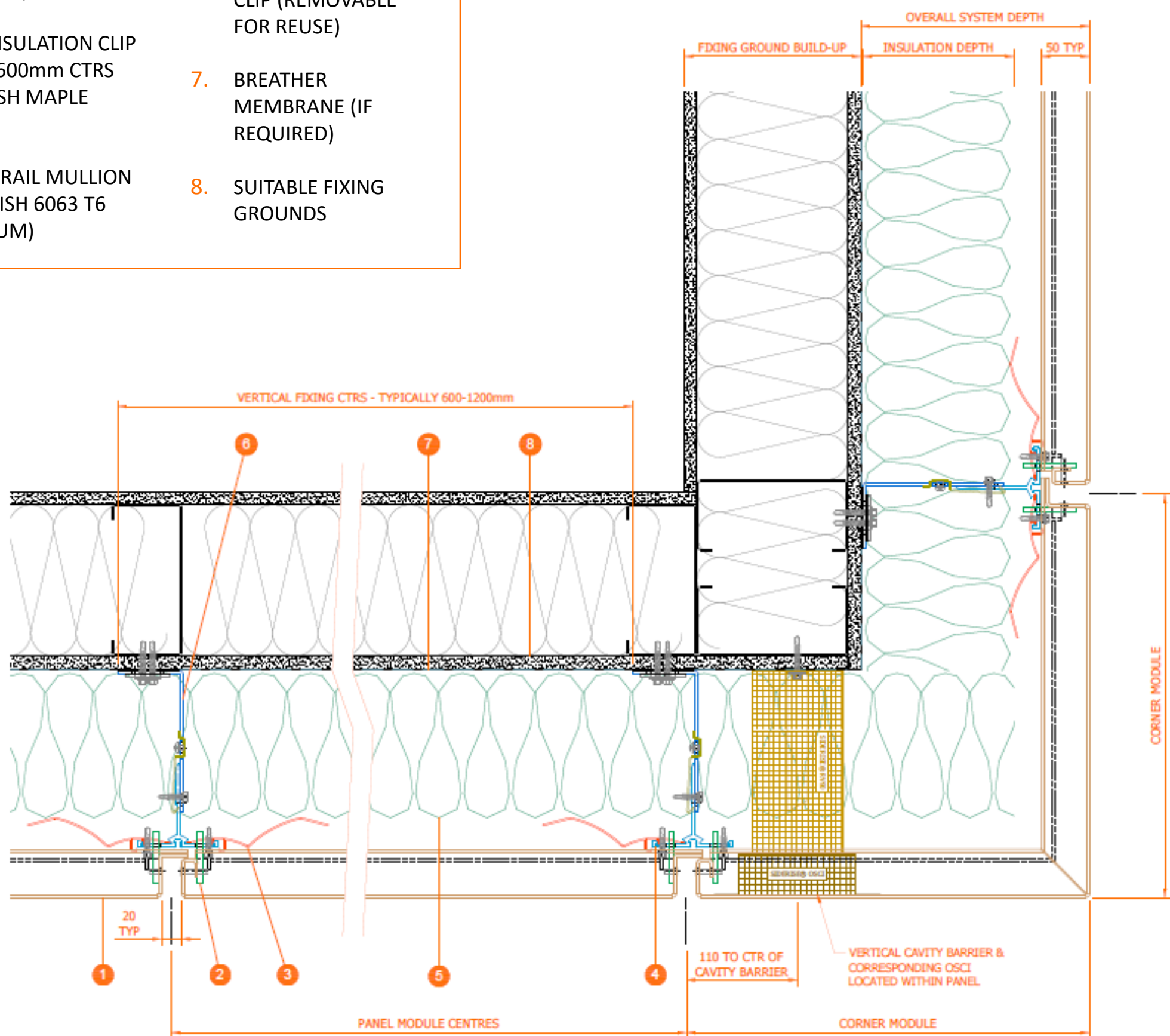
Units 11a-11d Bramhall Technology Park, Pepper Rd
Hazel Grove, Stockport, Cheshire, SK7 5SA

ASPECT CTV

Rainscreen façade system

Drawing legend

- | | |
|--|--|
| 1. MAPLE CASSETTE PANEL. MATERIAL AS REQUIRED (DETAIL INDICATES 3mm ALUMINIUM) | 5. THERMAL INSULATION AS REQUIRED |
| 2. MAPLE PANEL SIDE HOOK (5000 SERIES ALUMINIUM, TYPICALLY MILL FINISH) | 6. MAPLE 304Gr STAINLESS STEEL BRACKET c/w HELPING HAND CLIP (REMOVABLE FOR REUSE) |
| 3. MAPLE INSULATION CLIP AT MAX. 600mm CTRS (PPC FINISH MAPLE ORANGE) | 7. BREATHER MEMBRANE (IF REQUIRED) |
| 4. MAPLE T-RAIL MULLION (MILL FINISH 6063 T6 ALUMINIUM) | 8. SUITABLE FIXING GROUNDS |



DRAWING TITLE: ASPECT CTV RAINSCREEN SYSTEM EXTERNAL CORNER DETAIL

DATE: JAN 2023

DRAWN: EMG

SCALE: DO NOT SCALE

DOCUMENT REF: SD-RS-CA-AV-012

MAPLE

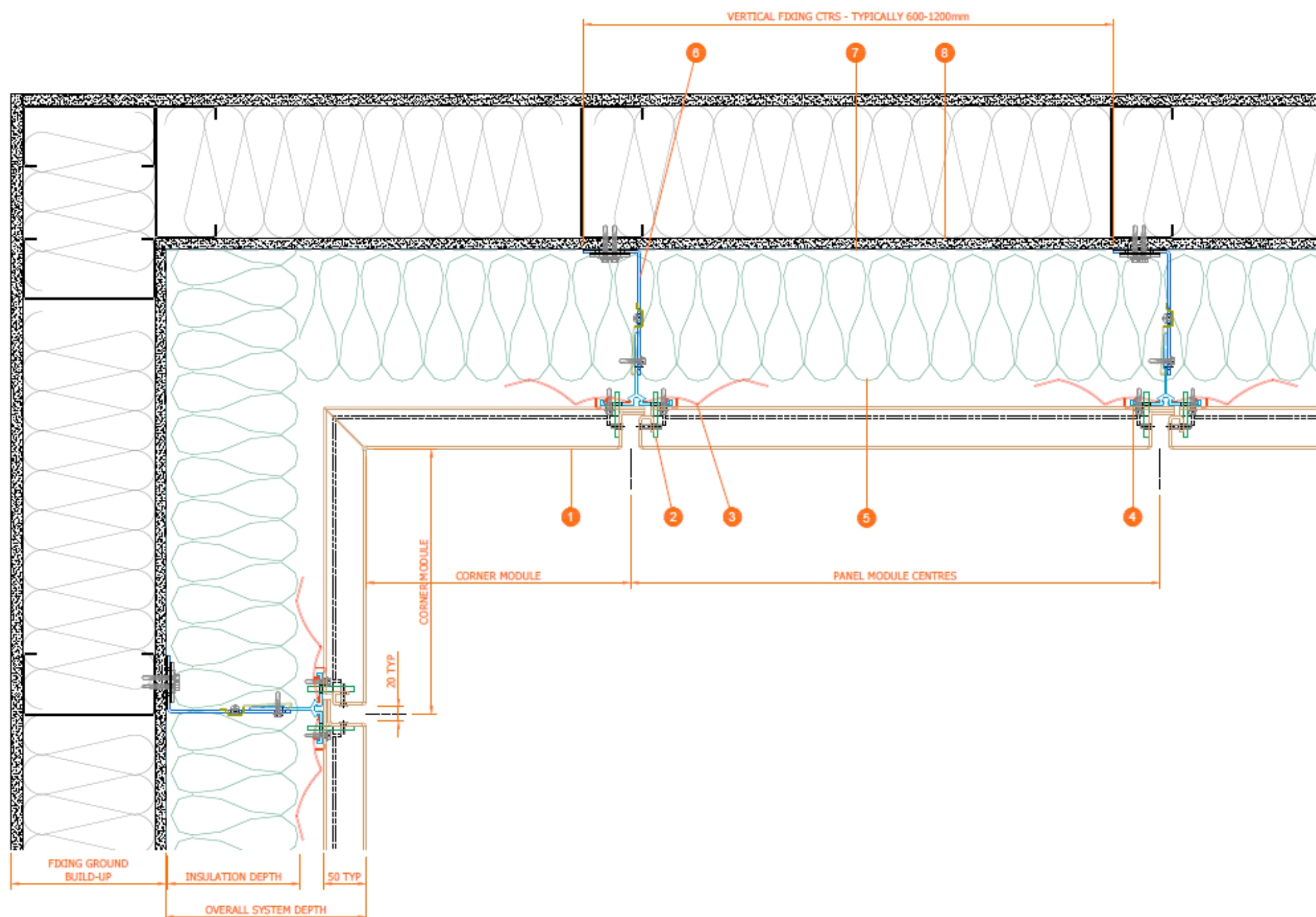
www.maplesunscreening.co.uk

Tel: 0161 456 6644

Units 11a-11d Bramhall Technology Park, Pepper Rd
Hazel Grove, Stockport, Cheshire, SK7 5SA

ASPECT CTV

Rainscreen façade system



Drawing legend

- | | | |
|--|--|------------------------------------|
| 1. MAPLE CASSETTE PANEL. MATERIAL AS REQUIRED (DETAIL INDICATES 3mm ALUMINIUM) | 4. MAPLE T-RAIL MULLION (MILL FINISH 6063 T6 ALUMINIUM) | 7. BREATHER MEMBRANE (IF REQUIRED) |
| 2. MAPLE PANEL SIDE HOOK (5000 SERIES ALUMINIUM, TYPICALLY MILL FINISH) | 5. THERMAL INSULATION AS REQUIRED | 8. SUITABLE FIXING GROUNDS |
| 3. MAPLE INSULATION CLIP AT MAX. 600mm CTRS (PPC FINISH MAPLE ORANGE) | 6. MAPLE 304Gr STAINLESS STEEL BRACKET c/w HELPING HAND CLIP (REMOVABLE FOR REUSE) | |

DRAWING TITLE: ASPECT CTV RAINSCREEN SYSTEM INTERNAL CORNER DETAIL

DATE: JAN 2023

DRAWN: EMG

SCALE: DO NOT SCALE

DOCUMENT REF: SD-RS-CA-AV-013

MAPLE

www.maplesunscreening.co.uk

Tel: 0161 456 6644

Units 11a-11d Bramhall Technology Park, Pepper Rd
Hazel Grove, Stockport, Cheshire, SK7 5SA



ASPECT CTV RAINSCREEN FAÇADE SYSTEM

Thermal insulation: To suit project specific requirements for U-value. A1/A2 rated mineral wool insulation - thickness dependent on U-value requirements.

Secondary support system:

eClips rainscreen façade support system. Consult manufacturer for details

Cavity fire barriers: Consult fire engineer and insert requirements.

Cladding panels:

- 3 mm solid aluminium.
- 3 mm perforated aluminium.
- 2 mm solid stainless steel.
- 2 mm perforated stainless steel.
- 2 mm solid Corten steel.
- 2 mm perforated Corten steel.

Panel joints: Typically 20 mm joints to suit panels.

Reveals: To suit system requirements around window openings. Consult manufacturer and insert requirements.

Bracket: 304 grade stainless steel.

- CWCT tested up to 12 kNm².
- Removable and recyclable helping-hand clip.

Projection: Ranging from 90-290 mm.

Bracket centres (maximum): Up to 1200 mm.

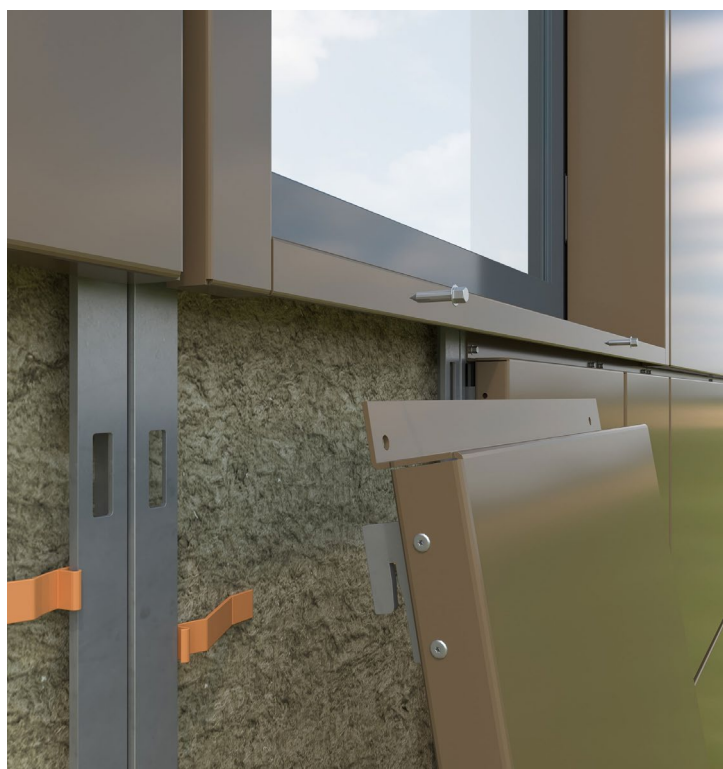
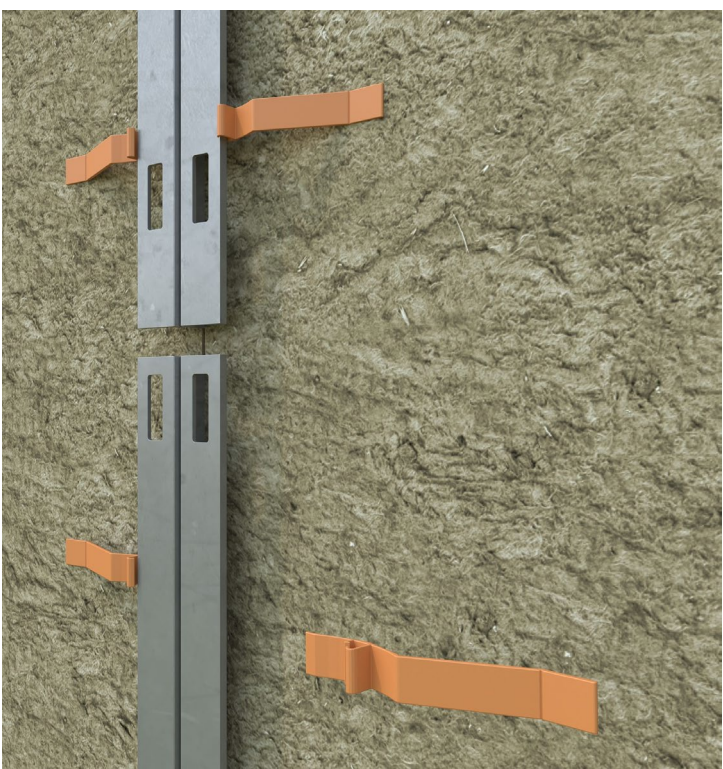
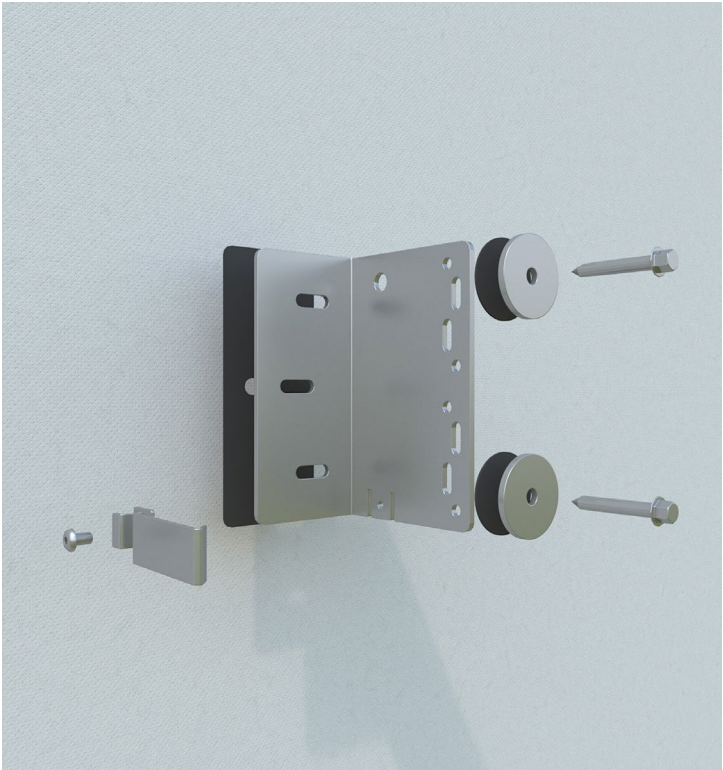
Fixing system: Discreet hidden fixing.

Insulation clips: 6063 grade T4 aluminium, PPC finish Maple Orange for visibility.

- Patent-pending design improves HSE and installation efficiency when fixing insulation into position. Adaptable for different insulation thicknesses.
- Maximum centres of up to 600 mm vertical and horizontal fix.

ASPECT CTV

Rainscreen façade system



MAPLE

ABOUT MAPLE

Maple is a leading designer, manufacturer and installer of solar shading, weather protection and screening for building exteriors and interiors. Since 1983, we've been combining innovation, technical excellence and exceptional customer service to deliver projects that save energy, create visual impact and make buildings more comfortable for their occupants.

Based in the UK, we're best known for our architectural façades, louvres and brise soleil — so rainscreen cladding systems were a natural extension to our range. Using our design expertise and unrivalled understanding of the sector, we've created a class-leading, commercially viable system that's high-performing, strong and easy to install.

Today, we work with construction companies on individual projects and large developments, while many of the UK's leading architects trust us to turn their visions into practical, beautiful and award-winning reality.

Aspect is a registered trademark of Maple Sunscreening Ltd.



Maple Sunscreening Ltd

Bramhall Moor Technology Park, Pepper Road, Hazel Grove, SK7 5SA

Call: **0161 456 6644**

Email: **sales@maplesunscreening.co.uk**

Visit: **maplesunscreening.co.uk**

 [/maplesunscreening](https://www.linkedin.com/company/maplesunscreening)